



**NOAA
FISHERIES**



Enforcement Overview

Caribbean Fishery Management Council Meeting
August 13, 2025





Trainings



- Living Marine Resource Training
 - Federal violations/trends, case referral
- Seafood Import Restrictions
 - Multi-Agency collaboration
 - Port Inspections
- Local Ad-Hoc trainings



NOAA
FISHERIES



Cases

- Abrir la Sierra Incursion
 - From Joint Patrol (USCG)
 - 25 deep water snapper
- Possession of Conch
 - West coast of Puerto Rico
 - From Joint Patrol (DNER)



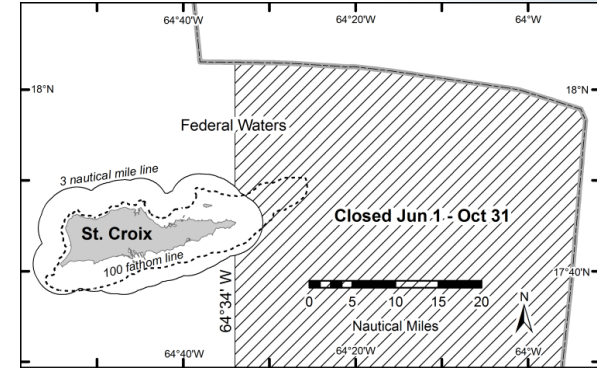
NOAA
FISHERIES



Enforcement Reminders

Queen Conch Closed

USVI east of 64°34'W, through 10/31



Dolphin/Wahoo

Min size, recreational bag limits



KNOW YOUR BOUNDARIES/REGULATIONS



NOAA
FISHERIES



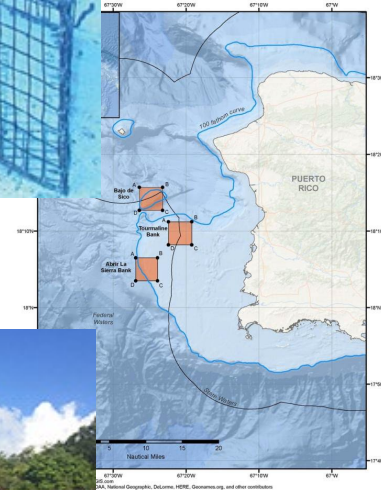
Enforcement Reminders

Fish Trap Use

- Properly Marked Gear-Vessel Number, /Color Code buoy at ends
- Labeled Buoys
- Unmarked Gear may be removed
- No setting in closure areas



Areas - Bajo de Sico, Tourmaline Bank & Abrir la Sierra Bank



credit: D. Bryan, St. Thomas Fishermen's Association

Encourage Tips/Trap Locations





Report A Violation

NOAA's Law Enforcement Hotline,
available 24/7 at
(800) 853-1964

- Location, time, and date of the activity.
- Description of the activity.
- Name(s) of the vessel, owner/operator, captain, crew, or additional witnesses.



NOAA
FISHERIES

QUESTIONS

